



LARKSFIELD  
▪ P L A C E ▪

# Assisted Living & Memory Support



*Featuring...*

*a Montessori Inspired Lifestyle®*

# LARKSFIELD PLACE

## *Assisted Living & Memory Support*

---

From the original vision, Larksfeld Place today is a hallmark of unquestioned value and security. A full continuum of care provides a lifestyle that is sensible and affordable for people 65 and above. The value is clear; Larksfeld provides security and complete access to award winning service and the highest rated care at cost levels that are competitive with any a la carte community based model. The Larksfeld Place model: Protect and secure the future and provide the area's finest facilities, highest rated care, and best trained staff.

Residents in all levels of care receive specialty services that include music therapy, creative art therapy and personal wellness training at no extra charge! Creating meaningful activities for residents that focus on their strengths, not their limitations, is our top priority. Exceptional healthcare is your safety net at Larksfeld Place with high nursing staff-to-resident ratios and emergency help at your fingertips!







*Welcome!*



At Larksfield Place, assisted living and memory support provides the same services as independent living, but goes beyond to provide supportive services and nursing care to foster continued independence for people limited by chronic health conditions such as arthritis, heart disease and dementia.



A complete program of assistance with activities of daily living, including the management of medications, bathing, dressing and personal care is developed for each resident. Licensed nursing supervision, therapeutic activities, and award winning rehabilitation services are provided 24-hours a day, seven days a week. Most importantly, all residents benefit from the award winning, highest rated health and wellness services in Wichita.





## MONTHLY FEE *Includes*

---

- Three chef-inspired meals daily with restaurant-style service
- All utilities, excluding telephone
- Essential Cable and Cox Internet
- Educational and entertaining enrichment activities
- Complimentary happy hour
- Weekly housekeeping and personal laundry service
- Individualized care plan management
- Assistance with activities of daily living
- Medication management
- Fitness classes
- Scheduled transportation
- Emergency call system and 24-hour staff response
- Security system and 24-hour security staff
- Interior and exterior maintenance services

## ADDITIONAL EXPENSES

---

- Additional bathing and dressing services
- Home health care
- Guest meals
- Private transportation service
- Personal telephone service
- Scheduled podiatry service on site
- Scheduled lab work and therapies on site
- Beauty and barber services







# LIFE AT *Larksfeld*



## ENDLESS *Opportunities*

Activities at Larksfeld Place are designed to engage all of your senses throughout the week! Choose classes and activities to fit YOUR lifestyle, interests and schedule. There is an array of fitness classes, clubs, games and more to try!



*At Larksfield Place, we have everything you need—and it's just a short distance from your maintenance-free apartment.*

- Relaxation Nook
- Fitness Nook
- Tinker Nook
- Cyber Nook
- Tea Room
- Fireside
- Fitness Club
- Courtyard



Our assisted living community features a Tea Room as well as a more formal dining room.

The beautifully designed Larksfield Legacy Tea Room is a place to enjoy a cup of tea or a visit with friends while relaxing in a gracious atmosphere. There are many delicious sweets and savories to be enjoyed as well as a variety of teas! Many tea parties and events are hosted here throughout the year.

You don't have to give up your favorite hobbies. Get comfy with a book in the relaxation nook, enjoy a drink in the courtyard with a friend or Zoom your relatives in the Cyber Nook! There's no shortage of activities, atmosphere or company at Larksfield Place.



# Stunning floor plans with *modern* amenities & *sophisticated* style.

---

You'll find 72 apartment homes, larger than those at most of the region's retirement communities.

As the area's most trusted continuing care retirement community, we invite you to take a look at some of the features of our Assisted Living and Memory Support community. Every design feature is based on our philosophy of aging in place and creating quality residences.

## EACH APARTMENT INCLUDES:

---

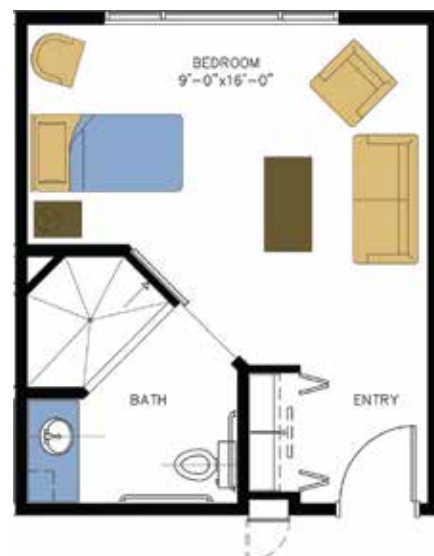
- Individually controlled central air conditioning and heating
- 24-Hour emergency response system
- Pella windows with built-in blinds
- Walk-in European shower
- Privacy with space for personal touches and belongings
- Plus size apartments include kitchenettes equipped with full-size stainless-steel refrigerator, dishwasher and microwave
- Studio apartments include microwave and efficiency-size refrigerator

## *Studio*

### ENHANCED ASSISTED LIVING & MEMORY SUPPORT

---

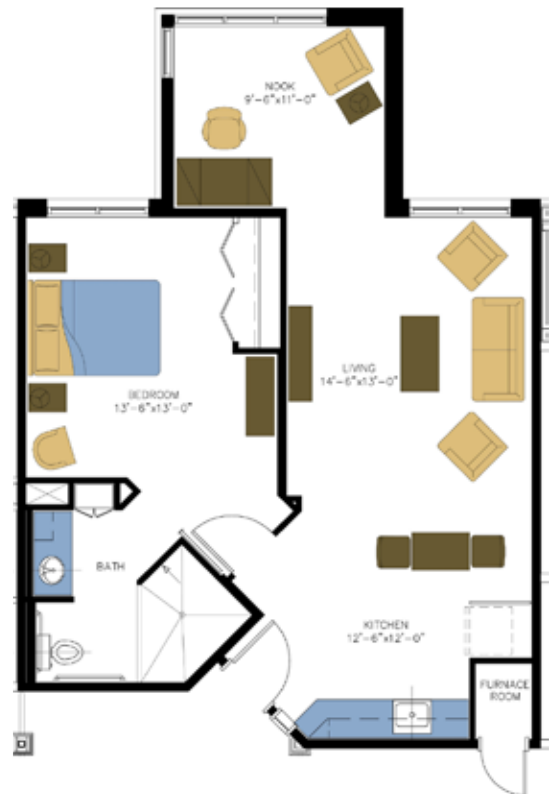
- 330 sq. ft.
- 1 bedroom
- 1 bath



## *One Bedroom Plus*

### ASSISTED LIVING

- 850 sq. ft.
- 1 bedroom
- 1 bath



## *Two Bedroom Plus*

### ASSISTED LIVING

- 1,150 sq. ft.
- 2 bedroom
- 2 bath







## MEMORY *Support*

### Montessori Inspired Lifestyle®

Larksfield Memory Support offers Montessori Inspired Lifestyle®, a positive approach to providing care for adults living with dementia or Alzheimer's disease. The Montessori Inspired Lifestyle approach of care is based on the methods of Maria Montessori, as adapted for adults by Dr. Cameron Camp, founder of the Center for Applied Research in Dementia. This approach allows residents to focus on their individual strengths and engage in meaningful activities.

Residents are supported through specially designed environments, engaging social activities, and individualized care. Caregivers working in memory support receive training and ongoing in-service continuing education that relates to dementia and Alzheimer's disease.

**Larksfield Place is the *first and only* facility in Kansas to achieve Gold Level Certification as a Montessori Inspired Lifestyle® community.**

We are part of an exclusive group of credentialed senior living communities that have implemented the revolutionary Montessori-based approach to Memory Care. For more information check out [larksfield.org/blog/larksfield-place-first-in-kansas/](https://larksfield.org/blog/larksfield-place-first-in-kansas/)



### MEMORY CARE INCLUDES:

- Montessori Inspired Lifestyle® Approach for Dementia Care
- All utilities, excluding telephone and internet
- Basic cable TV
- Scheduled transportation
- Life Enrichment programs
- 24-hour emergency call system
- 24-hour on-site staffing
- Weekly housekeeping and linen services
- Personal laundry
- Three chef-inspired meals per day
- Access to secure outdoor gardens
- Personal assistance/queuing with activities of daily living
- Medication management





## TRANSITIONAL *Care*

Transitional Care is a short stay for seniors who have been discharged from the hospital or skilled nursing care and are not quite ready to return home. This collaboration of care and services is designed to achieve quality outcomes, a positive patient experience and to reduce unnecessary readmissions to the hospital, available 24/7, allowing for less than a 30-day stay.

Services & accommodations include: 24-hour staff, licensed nursing, physical, occupational and speech therapies as needed, medication management, private apartments with personal alert systems in case of emergencies. Apartments are furnished and decorated. Chef-prepared meals available in the dining room.

Short-term stays are subject to availability. One does not have to be a resident of Larksfield Place to take advantage of this opportunity. Accommodations are private pay and less expensive than a home health caregiver.





## ASSISTED LIVING

	Monthly Fee
1 Bedroom Plus	\$6,770
2 Bedroom Plus	\$8,030
2nd Person, No Care	\$1,490
2nd Person, Care	\$3,090
Additional Enhanced Services + \$1,540 pp	

**See Page 4  
for items  
included in the  
monthly fee.**

## ENHANCED ASSISTED LIVING

### Enhanced Assisted Living Studio

#### Monthly Fee

\$6,120

### Transitional Care Fee

\$250 per day

In addition to Assisted Living benefits, Enhanced Assisted Living includes bathing services and greater support for activities of daily living.



## MEMORY SUPPORT

### Memory Support Studio

#### Monthly Fee

\$8,330

In addition to Assisted Living benefits, Memory Support also Includes:

- Montessori Inspired Lifestyle® Approach for Dementia Care
- Life Enrichment programs
- Access to secure outdoor gardens
- Personal assistance with activities of daily living including medication management

**A \$1,500 non-refundable Community Fee will be due at move-in.**

*Coordination of services provide residents with high-quality care, safety and security in an intimate residential setting. Staff engagement is our premise for a supportive environment for those who reside permanently as well as our short-stay residents who will be transitioning back home.*



2727 N. ROCK ROAD, WICHITA, KS 67226

Larksfeld.org | 316.361.2800